

施耐德液压（中国）技术服务中心
科福路355号上海·中国
www.cosure.net
www.schneider-hydraulic.cn

Jos. Schneider Optische Werke GmbH
ist ISO 9001 zertifiziert.

Alle Angaben ohne Gew. hr.
nderungen vorbehalten.

Jos. Schneider Optische Werke GmbH
is certified ISO 9001.

We accept no responsibility for any errors
and reserve the right of modification without
further notice.

© Jos. Schneider Optische Werke GmbH

Schneider-Kreuznach 施耐德伺服液压 Servohydraulic Components

 **Schneider**
KREUZNACH



电液控制系统的伺服阀

Servovalves for electrohydraulic control systems

伺服阀是电液控制系统的核心部分，高质量的伺服阀直接关系到设备的动态和静态性能指标。

施耐德带阀蕊、阀套的单级和多级滑阀式伺服阀能够满足这些设备的要求。

施耐德的伺服阀因其可靠性和维护简单而有名。

施耐德伺服阀包括单级、双级和三级形式。流量范围从0.4升到700升/分钟。

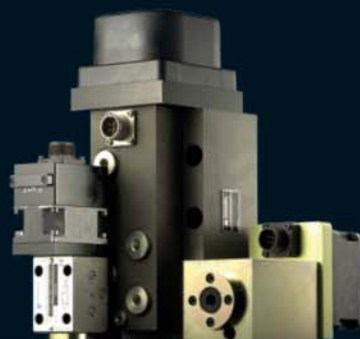
除了这些标准的系列件外，施耐德还提供特殊用途的伺服阀系列。特殊特性曲线，低泄漏，双向节流边和高动态响应。

The servovalve is the heart of every electrohydraulic control. High quality equipment is essential to meet the static and dynamic requirements.

The Schneider-Kreuznach spool and sleeve valves single-stage and multi-stage with their simple construction, comply with these criteria perfectly.

Schneider-Kreuznach servovalves are renowned for reliability and easy maintenance.

The servovalve program includes valves in one-stage, two-stage and three-stage models with a flow range of 0.4 to 700 l/min. In addition to the comprehensive standard program, Schneider-Kreuznach provides many adapted valve models – special characteristic curves, pistons with very little waste oil, two reverse edges or highly dynamic valves.



伺服阀产品介绍

Servovalves overview



HVM 061 伺服阀

带或不带集成放大器的单级伺服阀

- NG 6 安装尺寸
- 额定流量 $\Delta p 70 \text{ bar}$ (可选择)
- 工作压力
- 2芯M8 插头电气连接
- 阶跃响应0~90%
- 滞环
- 带集成放大器，用7芯插头线连接
- 电源供应
- 额定电流输入



HVM 061 Servovalve

Single stage 4/3 way servovalve with or without onboard electronics

- Size NG6; mounting surfaces
- Rated flow at $\Delta p 70 \text{ bar}$ (optional)
- Operating pressure
- Electrical connection via 2pole M8 plug; rated current
- Step response 0–90%
- Resolution without dither
- With integrated electronics, electrical connection via 7pole cable socket
- Electrical power supply
- Rated input (optional)

ISO 4401-03-02-0-05
1 l/min | 3 l/min | 5 l/min
0–315 bar

$\pm 200 \text{ mA}$
< 4 ms
< 0,4%

24V DC | 10 W
 $\pm 10 \text{ V} | \pm 20 \text{ mA} | 4–20 \text{ mA}$



HVM 062 伺服阀

双级4/3路伺服阀（带或不带放大器）

- NG 6 安装尺寸
- 额定流量 $\Delta p 70 \text{ bar}$ (可选择)
- 工作压力
- 2芯M8 插头电气连接
- 阶跃响应0~90%
- 滞环
- 带集成放大器，用7芯插头线连接
- 电源供应
- 额定电流输入（选择）



HVM 062 Servovalve

Two stage 4/3 way servovalve with or without onboard electronics

- Size NG6; mounting surfaces
- Rated flow at $\Delta p 70 \text{ bar}$ (optional)
- Operating pressure
- Electrical connection via 2pole M8 plug; rated current
- Step response 0–90%
- Resolution without dither
- With integrated electronics, electrical connection via 7pole cable socket
- Electrical power supply
- Rated input (optional)

ISO 4401-03-02-0-05
5 l/min | 10 l/min | 20 l/min |
30 l/min
0–315 bar

$\pm 200 \text{ mA}$
< 4 ms
< 0,4%

24V DC | 10 W
 $\pm 10 \text{ V} | \pm 20 \text{ mA} | 4–20 \text{ mA}$

伺服阀产品介绍

Servovalves overview



HVM 063 伺服阀

带或不带集成放大器的单级伺服阀

- NG 6 安装尺寸
- 额定流量 $\Delta p 70 \text{ bar}$ (可选择)
- 工作压力
- 2级M8 插头电气连接
- 阶跃响应0~90%
- 滞环
- 带集成放大器, 用7芯插头线连接
- 电源供应
- 额定电流输入

ISO 4401-03-02-0-05
10 l/min | 20 l/min
0-210 bar

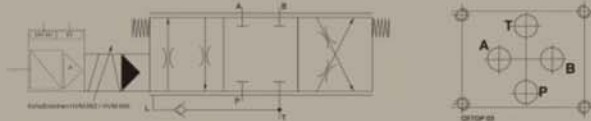
$\pm 300 \text{ mA}$
< 5 ms
< 0,4%

24V DC | 10 W
 $\pm 10 \text{ V} | \pm 20 \text{ mA} | 4-20 \text{ mA}$

HVM 063 Servovalve

Single stage 4/3 way servovalve with or without onboard electronics

- Size NG6; mounting surfaces
- Rated flow at $\Delta p 70 \text{ bar}$ (optional)
- Operating pressure
- Electrical connection via 2pole M8 plug; rated current
- Step response 0-90%
- Resolution without dither
- With integrated electronics, electrical connection via 7pole cable socket
- Electrical power supply
- Rated input (optional)



HVM 064 伺服阀

双级4/3路伺服阀 (带或不带放大器)

- NG 6 安装尺寸
- 额定流量 $\Delta p 70 \text{ bar}$ (可选择)
- 工作压力
- 2级M8 插头电气连接
- 阶跃响应0~90%
- 滞环
- 带集成放大器, 用7芯插头线连接
- 电源供应
- 额定电流输入 (选择)

ISO 4401-03-02-0-05
10 l/min | 20 l/min | 30 l/min |
40 l/min
10-315 bar

$\pm 300 \text{ mA}$
< 4 ms
< 0,4%

24V DC | 10 W
 $\pm 10 \text{ V} | \pm 20 \text{ mA} | 4-20 \text{ mA}$

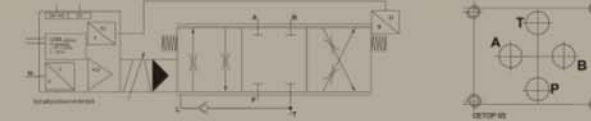
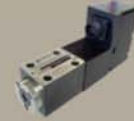
HVM 064 Servovalve

Two stage 4/3 way servovalve with or without onboard electronics

- Size NG6; mounting surfaces
- Rated flow at $\Delta p 70 \text{ bar}$ (optional)
- Operating pressure
- Electrical connection via 2pole M8 plug; rated current
- Step response 0-90%
- Resolution without dither
- With integrated electronics, electrical connection via 7pole cable socket
- Electrical power supply
- Rated input (optional)

伺服阀产品介绍

Servovalves overview



HVM 065 伺服阀

单级4/3路带放大器的伺服阀

- NG 6 安装尺寸
- 额定流量 $\Delta p 70 \text{ bar}$
- 工作压力
- 带位置反馈
- 阶跃响应0~90%
- 滞环
- 通过7芯电缆线进行电气连接
- 电源供应
- 输入电压电流

ISO 4401-03-02-0-05
5 l/min | 10 l/min | 20 l/min |
40 l/min
0-315 bar

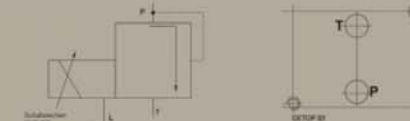
< 8 ms
< 0,1%

24V DC | 20 W
 $\pm 10 \text{ V} | \pm 20 \text{ mA} | 4-20 \text{ mA}$

HVM 065 Servovalve

Single stage 4/3 way servovalve with onboard electronics

- Size NG6; mounting surfaces
- Rated flow at $\Delta p 70 \text{ bar}$ (optional)
- Operating pressure
- Integrated position control loop with repatriated piston position
- Step response 0-90%
- Resolution without dither
- Electrical connection via 7pole cable socket
- Electrical power supply
- Rated input



HVD 306 压力控制阀

单级压力控制阀

- 工作压力
- NG 6 安装尺寸
- 3芯电线连接
- 额定输入
- 滞环
- 最大额定流量

1-60 bar | 1-120 bar |
1-210 bar | 1-400 bar | 1-700 bar
ISO 4401-03-02-0-05

750 / 1000 mA
< 7,0%
10 l/min

HVD 306 Pressure control valve

Single-stage pressure control valve

- Operating pressure (optional)
- Size NG6; mounting surfaces
- Electrical connection via 3pole plug; rated current
- Resolution without dither
- rated flow_{max}

伺服阀产品介绍

Servovalves overview



HVM 057 伺服阀

2级4/3 通伺服阀带放大器或不带

- NG 10 安装尺寸
- 额定流量 $\Delta p 70\text{bar}$
- 工作压力
- 4芯线电气连接
- 额定电流
- 阶跃响应0~90%
- 滞环
- 带集成的放大器, 通过7芯线电气连接
- 电源供应
- 额定输入 (可选择)

ISO 4401-05-04-0-05
5 l/min | 10 l/min | 20 l/min |
30 l/min | 40 l/min
10-315 bar

$\pm 300\text{mA}$
< 4 ms
< 0,5%

24V DC | 15 W
 $\pm 10\text{V} | \pm 20\text{mA} | 4-20\text{mA}$

HVM 057 Servovalve

Two stage 4/3 way servovalve
with or without onboard electronics

- Size NG10; mounting surfaces
- Rated flow at $\Delta p 70\text{bar}$ (optional)
- Operating pressure
- Electrical connection via 4pole cable socket; rated current
- Step response 0-90%
- Resolution without dither
- With integrated electronics, electrical connection via 7pole cable socket
- Electrical power supply
- Rated input (optional)



HVM 067 伺服阀

2级4/3 通伺服阀带放大器或不带

- NG 10 安装尺寸
- 额定流量 $\Delta p 70\text{bar}$
- 工作压力
- 4芯线电气连接
- 额定电流
- 阶跃响应0~90%
- 滞环
- 带集成的放大器, 通过7芯线电气连接
- 电源供应
- 额定输入 (可选择)

ISO 4401-05-04-0-05
60 l/min | 80 l/min | 100 l/min |
120 l/min
10-315 bar

$\pm 300\text{mA}$
< 5 ms
< 0,5%

24V DC | 15 W
 $\pm 10\text{V} | \pm 20\text{mA} | 4-20\text{mA}$

HVM 067 Servovalve

Two stage 4/3 way servovalve
with or without onboard electronics

- Size NG10; mounting surfaces
- Rated flow at $\Delta p 70\text{bar}$ (optional)
- Operating pressure
- Electrical connection via 4pole cable socket; rated current
- Step response 0-90%
- Resolution without dither
- With integrated electronics, electrical connection via 7pole cable socket
- Electrical power supply
- Rated input (optional)

伺服阀产品介绍

Servovalves overview



HVM 090 伺服阀

2级4/3 通伺服阀带放大器或不带

- NG 10 安装尺寸
- 额定流量 $\Delta p 70\text{bar}$
- 工作压力
- 4芯线电气连接
- 额定电流
- 阶跃响应0~90%
- 滞环
- 带集成的放大器, 通过7芯线电气连接
- 电源供应
- 额定输入 (可选择)

ISO 4401-05-04-0-05
10 l/min | 20 l/min | 40 l/min |
60 l/min
10-315 bar

$\pm 300\text{mA}$
< 7 ms
< 0,5%

24V DC | 15 W
 $\pm 10\text{V} | \pm 20\text{mA} | 4-20\text{mA}$

HVM 090 Servovalve

Two stage 4/3 way servovalve
with or without onboard electronics

- Size NG10; mounting surfaces
- Rated flow at $\Delta p 70\text{bar}$ (optional)
- Operating pressure
- Electrical connection via 4pole cable socket; rated current
- Step response 0-90%
- Resolution without dither
- With integrated electronics, electrical connection via 7pole cable socket
- Electrical power supply
- Rated input (optional)



HVM 250 伺服阀

2级4/3 通伺服阀

- NG 25 安装尺寸
- 额定流量 $\Delta p 70\text{bar}$
- 工作压力
- 通过4芯线电气连接, 电流输入
- 额定电流
- 阶跃响应0~90%
- 滞环

ISO 4401-08-08-0-05
80 l/min | 120 l/min | 200 l/min |
300 l/min
10-315 bar

$\pm 300\text{mA}$
< 8 ms
< 0,5%

HVM 250 Servovalve

Two stage 4/3 way servovalve

- Size NG25; mounting surfaces
- Rated flow at $\Delta p 70\text{bar}$ (optional)
- Operating pressure
- Electrical connection via 4pole cable socket; rated current
- Step response 0-90%
- Resolution without dither

伺服阀产品介绍

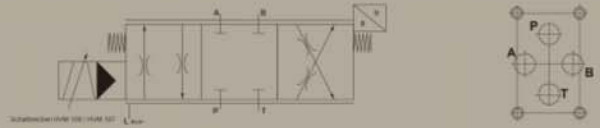
Servovalves overview



HVM 106 伺服阀

2级4/3 通伺服阀带放大器或不带

- 安装尺寸
- 额定流量 $\Delta p 70\text{bar}$
- 工作压力
- 通过4芯线电气连接, 额定输入
- 阶跃响应0~90%
- 滞环



HVM 106 Servovalve

Two stage 4/3 way servovalve with or without onboard electronics

Special
80 l/min | 120 l/min | 180 l/min
5–420 bar

- Size; mounting surfaces
- Rated flow at $\Delta p 70\text{bar}$ (optional)
- Operating pressure
- Electrical connection via 4pole cable socket; rated current
- Step response 0–90%
- Resolution without dither

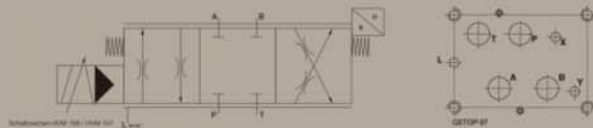
$\pm 300\text{mA}$
< 10 ms
< 0,1%



HVM 107 伺服阀

2级4/3 通伺服阀带放大器或不带

- 安装尺寸
- 额定流量 $\Delta p 70\text{bar}$
- 工作压力
- 通过4芯线电气连接, 额定输入
- 阶跃响应0~90%
- 滞环



HVM 107 Servovalve

Two stage 4/3 way servovalve with or without onboard electronics

ISO 4401-07-07
180 l/min | 250 l/min | 300 l/min
5–420 bar

- Size NG16; mounting surfaces
- Rated flow at $\Delta p 70\text{bar}$ (optional)
- Operating pressure
- Electrical connection via 4pole cable socket; rated current
- Step response 0–90%
- Resolution without dither

$\pm 300\text{mA}$
< 10 ms
< 0,1%

伺服阀产品介绍

Servovalves overview



HVM 68 伺服阀

单级 3/3 通伺服阀 蒸汽阀门上执行机构

- NG10 安装尺寸
- 额定流量 $\Delta p 35\text{bar}$
- 工作压力
- 通过4芯线电气连接, 额定输入
- 阶跃响应0~90%
- 滞环



HVM 068 Servovalve

Single-stage 3/3 way servovalve special valve actuators on steam valves

ISO 4401-05-04-0-05
65 l/min
0–40 bar

$\pm 300\text{mA}$
< 6 ms
< 0,5%

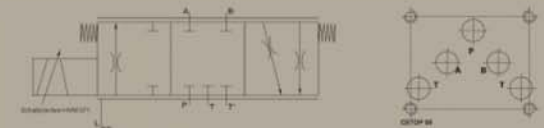
- Size NG10; mounting surfaces
- Rated flow at $\Delta p 35\text{bar}$
- Operating pressure
- Electrical connection via 4pole cable socket; rated current
- Step response 0–90%
- Resolution without dither



HVM 106 伺服阀

单级 3/3 通伺服阀 蒸汽阀门上执行机构

- NG10 安装尺寸
- 额定流量 $\Delta p 35\text{bar}$
- 工作压力
- 通过4芯线电气连接, 额定输入
- 阶跃响应0~90%
- 滞环



HVM 071 Servovalve

Two stage 4/3 way servovalve Special valve for punch and nippling drives

ISO 4401-05-04-0-05
100 l/min | 120 l/min
10–315 bar

$\pm 650\text{mA}$
< 3 ms
< 0,5%

- Size NG10; mounting surfaces
- Rated flow at $\Delta p 70\text{bar}$ (optional)
- Operating pressure
- Electrical connection via 4pole cable socket; rated current
- Step response 0–90%
- Resolution without dither

伺服阀产品介绍

Servo valves overview

Typ type	Anschluss- bild mounting surface	Sprung- antwort step response 0-90%[ms]	Q _N ΔP 70bar [l/min]	P _s [bar]	I N [mA]	integrierte Elektronik integrated electronics		应用 typical application	einstufig single stage	zweistufig two stage
						Spannung [V]	Schwert [mA]			
HVM 061	CETOP 03	4	0,4-8	0-315	200	24	±10 V 0-20 mA 4-20 mA	工程技术, 机器人 procedure technology, robots	X	
HVM 062	CETOP 03	3	5-30	10-315	200	24	±10 V 0-20 mA 4-20 mA	纺织机械, 机床 textile machines, machine tools		X
HVM 063	CETOP 03	5	0,5-20	0-210	300	24	±10 V 0-20 mA 4-20 mA	试验机, 纠偏控制 test benches, strip guiding systems	X	
HVM 064	CETOP 03	4	5-40	10-315	300	24	±10 V 0-20 mA 4-20 mA	液压缸控制 hydraulic axis control		X
HVM 065	CETOP 03	8	5-40	0-315		24	±10 V 0-20 mA 4-20 mA	试验机, 纠偏控制, 数控机床 test benches, strip guiding systems, machine tools	X	
HVM 057	CETOP 05	5	5-40	10-315	300	24	±10 V 0-20 mA 4-20 mA	试验机 test benches		X
HVM 067	CETOP 05	5	10-120	10-315	300	24	±10 V 0-20 mA 4-20 mA	金属成型机, 机床, 液压缸控制 forming machines, machine tools, hydraulic axis controls		X
HVM 090	CETOP 05	7	10-60	10-315	300	24	±10 V 0-20 mA 4-20 mA	压机, 校直机, 冲床 press brakes, straightening presses, punch machines		X
HVM 250	CETOP 08	5	120-300	10-315	300			压机, 冲床, 折弯机 press brakes, punch and nipples machines		X
HVM 106	Schneider N014	12	10-180	5-420	300			试验机, 纠偏控制, 带厚度控制AGC test benches, strip guiding systems, band thickness regulations	X	
HVM 107	CETOP 07	12	180-280	5-420	300			试验机, 纠偏控制, 带厚度控制AGC test benches, strip guiding systems, band thickness regulations		X
HVM 068	CETOP 05	5	50	0-40	300			电厂蒸汽机 steam power plant range actuators	X	
HVM 071	CETOP 05	4	100 / 120	10-315	300			冲床和套管接头机 punch and nipple machines		X

特种定制伺服阀

除了全面的标准伺服阀, 施耐德还提供大量其他应用定制伺服阀

- 流量小于0.4l/min
- 具有弯曲或渐进特性曲线的伺服阀
- 高动态性能伺服阀, 适用于t_s≤3ms
- 用于在冲床上加速 > 100g的减震伺服阀
- 特殊介质的伺服阀, 如制动液
- 高压力的带位置控制的气动伺服阀

Special valves

Besides the comprehensive standard servovalve program, Schneider-Kreuznach supplies a large quantity of servovalves, specially adapted for particular purposes:

- valves with very narrow flow for extreme precision < 0.4 l/min
- valves with bent or progressive characteristic curves
- highly dynamic valves for nibbles machines with t_w < 3 ms
- shock resistant valves for acceleration > 100g on punch presses
- valves for special fluids like brake fluid
- pneumatic servovalves for high-quality pressure and position control

应用介绍

Applications

建筑材料试验机

伺服阀控制试验机
旁边操作有1或2条边
伺服阀HVM025-005-1260-0G-BY



Building material testing machine

Servo valve controlled test machine
Bypass operated with 1 or 2 edges
Servo valve HVM025-005-1260-0G-BY

压力范围
分辨率
流量

0,2-500 bar
0,1 bar (1:5000)
0,5-5 l/min

Pressure Range
Resolution
Flow rate

铁路加工机器 捣固机

10轴伺服阀控制, 用于振动铁路路基
HVM090-060-1100-0G



Railway processing machine

10 Axis servovalve controlled, for vibration of the railroad bed to stabilize the underground
Servo valve HVM090-060-1100-0G

频率
行程
功率

bis 25 Hz
± 20 mm max
260 kW

Frequency
Stroke
Power

多轴数控机床

8-16轴机床
CNC伺服阀和连续路径控制
HVM062-020-1200-0B-E1



Multispindle machine tool

Machine tool with 8-16 axes
(CNC, Servo valve and continuous path control)
Servo valve HVM062-020-1200-0B-E1

分辨率
速度

± 2 μm
bis 0,5 m/s

Resolution
Velocity

钣金加工变压器铁芯

适用于冲穿12轴和位置控制的伺服阀
HVM067-100-1200-0G



Sheet metal processing transformer core

Punch and shearing application with 12 axes and position controlled servovalve.
Servo valve HVM067-100-1200-0G

分辨率
速度

± 10 μm
bis 1,3 m/s

Resolution
Velocity

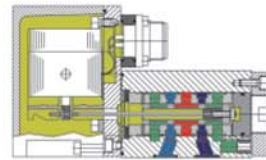


伺服阀控制旁路测试机械用 1 或 2 个边缘伺服阀 HVM025-005-1260-OG-BY

压力范围 : 0.2-500bar
分辨率 : 0.1 bar (1:5000)
流量 : 从 0.5 到 5 l/min

Servovalve controlled Test Machine
Bypass operated with 1 or 2 Edges
Servovalve HVM025-005-1260-OG-BY

Pressure Range : 0,2 to 500 bar
Resolution : 0,1 bar (1:5000)
Flow : from 0,5 to 5 l/min



HVM 025-005-1200-OG-BY

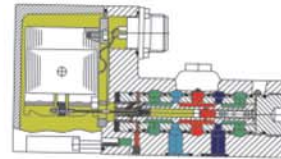


10 轴控制的伺服阀和稳定地铁地基震动的伺服阀是 HVM090-080-1100-OG

频率 : 可达 25Hz
幅值 : ± 20 mm max
功率 : 260kW

10 Axis servovalve controlled, for vibration of the railroad bed to stabilization the underground
Servovalve HVM090-080-1100-OG

Frequency : up to 25 Hz
Stroke : ± 20 mm max
Power : 260 kW



HVM 090-070-1100-OG

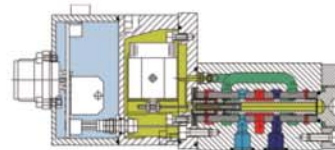


8-16 轴车床, CNC, 伺服和连续轴控制使用伺服阀 HVM062-020-1200-0A

分辨率 : ± 2 μm
速度 : 可达 0.3m/s

Tools Lathe Machine Application with 8-16 Axis, CNC, servovalve and continuous path control servovalve HVM062-020-1200-0A

Resolution : ± 2 μm
Velocity upto : 0,3 m/s



HVM 062-020-1400-0A-E1

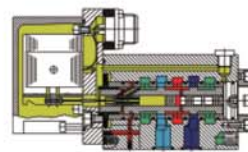


打孔机和 12 轴冲裁机和位置控制阀用 HVM067-100-1200-OG 伺服阀。

分辨率 : ± 10 μm
速度 : 可达 0,5 m/s

Punch and Shearing Application with 12 Axis and Servovalve controlled position Servovalve HVM067-100-1200-OG

Resolution : ± 10 μm
Velocity up to : 0,5 m/s



HVM 067-100-1100-OG

木工机械
Wood-working machinery



HYP123应用示意



短周期板材贴膜生产线



防火板热压机组



热板热压机组



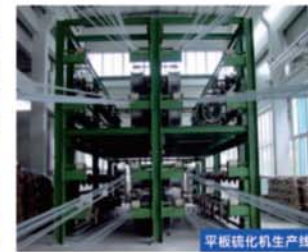
连续轧机



覆钢板热压合系统



塑花板成套设备



平板硫化机生产线



热磨系统



伺服油缸 HAZ091



HYP 123



PVM 064

应用 Applications

吹塑机
Blow Molding Machine



---可选用阀 HVM064

变压器制造业
Transformer Manufacturing



---可选用阀 HVM090

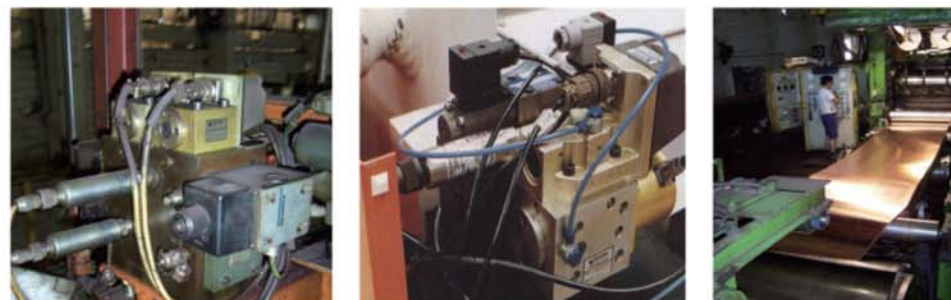
应用 Applications

纺织机械
Textile Machines



---可选用阀 HVM061

轧机
Rolling Mill



---可选用阀 HVM057

链条焊接机/矿山机械
Chain Welding Machine / Mining Machinery



---可选用阀 HVM057

电子元件 用于电子液控和电子气动控制技术

Electronic components for the electrohydraulic and electropneumatic control technology

1、和伺服阀一样，电子元件是电子液压和电子气动控制系统很重要的一部分。随着数字技术的应用和这些配件智能的增加，电子元件对液体控制技术整体影响在不断扩大。

2、施耐德在电液技术方面提供的电子产品系列从多种简单盒形设计的放大器和高性能的 PID 模拟控制器到高速、智能的 DSP-轴控制器。这种控制器是用于软件和参数可调的最佳系列。

3、数字技术可以根据设备控制需要为优化性能需要对参数进行调节。

4、数字技术的应用将引领电液控制领域的巨大变革。

Like the servovalves, the electronic equipment is a very important part of electrohydraulic and electropneumatic control systems. The influence of electronic components on the overall result of a fluidtechnical control constantly increases with the application of the digital technique and the increasing intelligence of these devices.

Schneider-Kreuznach's delivery program in electronics to control and regulate fluidtechnical drives varies from simple amplifiers in box-design and high-quality analog PID-controllers to the high-speed, intelligent DSP-axis controller. This system can be optimally programmed to the respective application by using the software and adapted parametrization.

The digital technique allows a totally reproducible adjustment of all parameters and well-directed influences on highly dynamical operation sequences.

The use of digital controllers leads to excellent control results and will considerably influence the future of electrohydraulic controls.

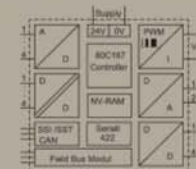


电子产品简介 Electronic overview



HE303 数字通用控制器
IP20和IP65版本

电源
输出电流
模拟输入(4X)
数字输入(4X)
运动获取界面
2X模拟输入
4X数字输入
参数接入
界面
保护等级
传感器连接插头



+24V DC
±200 | ±300 | ±660 | ±1000 mA
0...5V | 0...10V | ±5V | ±10V |
±20 mA | 4...20 mA
0 | 24 V
SSI | CAN-Bus transducers:
±10 V
0 | 24 V; 100 mA
RS 422
CAN-Bus (optional Profi-Bus
Interbus ...)
IP 65
M12
100 x 160 x 82 mm

Digital universal controller HE 303

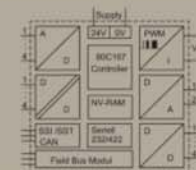
Version in IP20 and IP65

- Supply
- Output current for servovalve
- 4 x analog inputs
- 4 x digital inputs
- Interface of motion pickup
- 2 x analog outputs
- 4 x digital outputs
- Parameter intersection
- Interface
- Protection rating
- Connections sensor plug
- Box dimensions (b x l x h)



HE304 数字通用控制器
欧洲ED标准和带测量分

电源
伺服阀输出电流
4X模拟输入
4X数字输入
运动获取界面
2X模拟输入
4X数字输入
参数接入
界面
尺寸大小



+24V DC
±200 | ±300 | ±660 | ±1000 mA
0...5V | 0...10V | ±5V | ±10V |
±20 mA | 4...20 mA
0 | 24 V
SSI | CAN-Bus transducers:
±10 V
0 | 24 V; 100 mA
RS 232/422
CAN-Bus (optional Profi-Bus
Interbus ...)
100 x 160 mm, 10TE

Digital universal controller HE 304

European standard with LEDs
and measurement points

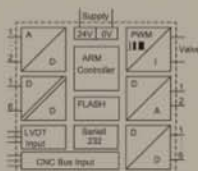
- Supply
- Output current for servovalve
- 4 x analog inputs
- 4 x digital inputs
- Interface of motion pickup
- 2 x analog outputs
- 4 x digital outputs
- Parameter intersection
- Interface
- Box dimensions (b x l x h)

电子产品简介 Electronic overview



HE302 数字控制器
带有数字信号的数字控制器处理器
优化用于冲孔和咬片机

- 电源
- 伺服阀输出电流
- 4X模拟输入
- 6X数字输入
- 用于感应的非接触式LVDT放大器运动传感器
- 6X轴输出
- 参数界面
- 盒子大小



+24V DC
± 650 mA
0...5V | 0...10V | ±5V | ±10 V
0 | 24 V mit LED
LVDT
0 | 24 V mit LED
CNC-Bus 16 bit parallel, RS 232
105 (150) x 110 x 185 mm

Digital axis controller HE 302

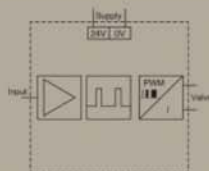
Digital controller with digital signal processor. Optimized to be used for punch and nibbling machines.

- Supply
- Output current for servovalve
- 4 x analog inputs
- 6 x digital inputs
- non-contact LVDT amplifier for inductive motion pickup on board
- 6 x digital outputs
- Parameter interface
- Box dimensions (b x l x h)



PWM 放大器
PC 或具有电脑输出的CNC控制器与轴距电机伺服阀之间的接口，可安装在调节伺服阀上。

- 电源
- 输入信号
- 输出电流（可调节）
- 尺寸大小



+ 24V DC (18V...28V)
±10V | ±20mA | 4...20mA
± 200...± 1000 mA

On board electronics for valves or external mounting

The interface between PC and CNC controls with signal output for servovalve. To be fitted to the servovalve or external mounting.

- Supply
- Input signals (optional)
- Output current, adjustable via potentiometer
- Box dimensions (according to the valve width and/or height)
- Protection class (for mounting on base plate or valve)

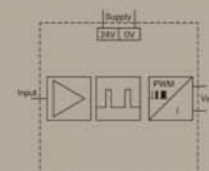
- 保护等级 IP 67

电子产品简介 Electronic overview



PWM放大器 BOExxx025
PC或具有电压输出的CNC控制器与轴距电机伺服阀之间的接口
可方便的安装于电气柜内标准35mm DIN卡轨上

- 电源
- 输入信号
- 输出信号
- 尺寸大小



+ 24V DC (18V...28V)
±10V | ±20mA | 4...20mA
± 200...±1000mA

PWM Box amplifier BOE xxx 025

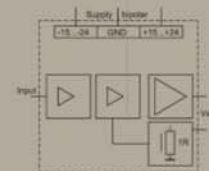
The interface between PC or CNC-controllers with voltage output for servovalves. For the assembly in the electro cabinet snapin on 35 mm DIN rail.

- Supply
- Input signals (optional)
- Output current, adjustable via potentiometer
- Box dimensions (b x l x h)



模拟放大器 BOE002
带快速和精密线性放大器的电流放大器
适用于所有的伺服阀
可方便安装于电气柜内标准35mm DIN卡轨上

- 电源
- 输入信号
- 输出信号
- 尺寸大小



+15...24V DC | -15...-24V DC
±10V
± 200 -700 mA

Analog amplifier Box BOE 002

Current amplifier with fast and precise linear amplifier. Suitable for all servovalves. For the assembly in the electro cabinet on 35 mm DIN rail snap-in.

- Supply (bipolar)
- Input signals
- Output current, adjustable via potentiometer
- Box dimensions (b x l x h)